

# EMSCULPT neo<sup>®</sup>

The  
**one**  
in Body  
Shaping

LESS

**Fat**

**Muscle** MORE

# The First of Its Kind

Considered a breakthrough in non-invasive body shaping, the EMSculpt NEO is the revolutionary procedure to simultaneously deliver heat and magnetic energy at the same time. This results in more **fat reduction and more muscle growth** compared to any single gold standard product.

MORE for LESS



**+25%** MORE Muscle on average\*

LESS **-30%** Fat on average\*

**COMBINED 30-MIN. TREATMENT**

The data shown represent the average results of 3 EMSculpt NEO's clinical studies\*. Results and patient experience may vary.

BEFORE



AFTER EMSculpt®



1 MONTH AFTER THE LAST TREATMENT, COURTESY OF: BTL AESTHETICS

BEFORE



AFTER EMSculpt®



1 MONTH AFTER THE LAST TREATMENT, COURTESY OF: DAVID KENT, M.D.

BEFORE



AFTER EMSculpt®



3 MONTHS AFTER THE LAST TREATMENT, COURTESY OF: BRUCE E. KATZ, M.D.

BEFORE



AFTER EMSculpt®

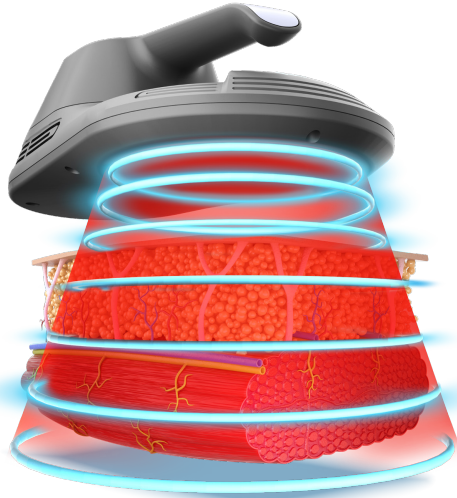


3 MONTHS AFTER THE LAST TREATMENT, COURTESY OF: RADINA DENKOVA, M.D.

# How It Works

**EMSCULPT NEO** is the world's first and only technology that uses **Radiofrequency and HIFEM+** (high intensity electromagnetic field) to **eliminate fat and build muscles non-invasively.**

**30**  
minutes



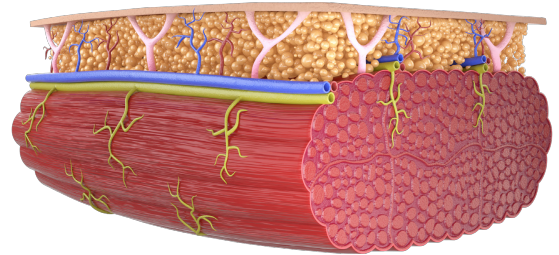
**RF**

**HIFEM+**

Results and patient experience may vary.

**LESS** **-30%**  
**Fat**

on average\*



**+25%** **MORE**  
**Muscle**

on average\*

The data shown represent the average results of 3 EMSculpt Neo's clinical studies.\*

## Fat Breakdown

In less than 4 minutes the **temperature in fat reaches** levels that cause their **permanent damage.**

## Muscle Warm-Up

The muscle **temperature raises** by several degrees, **similar to what a warm-up activity does before any workout.**

## Supramaximal Contraction

**Muscles** in the treated area **are contracted at intensities** that are **not achievable during routine exercise.**

## After Treatment

The **fat cells are slowly removed** from the body and the strained **muscle fibers initiate a growth process.** This results in **fat elimination and muscle building.**



# More Applicators & Body Parts

Emsculpt NEO individually tailored treatments can help you **lose fat and build muscles on various body parts.**

Walk-in  
Walk-out



**30**  
minutes  
**Fat & Muscle**  
**Non-invasive**



Biceps

Triceps

Abdomen

Buttocks

Calves



No Downtime  
No Anesthesia

Two Therapies in  
a Single Treatment



**2 for 1**

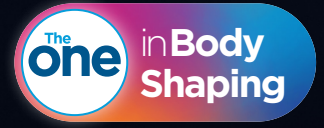
**PATIENTS UP TO BMI 35**

More Lift  
Less Time

EMSCULPT  
neo<sup>®</sup>



More Definition  
Less Commitment



BEFORE



AFTER EMSCULPT<sup>®</sup>

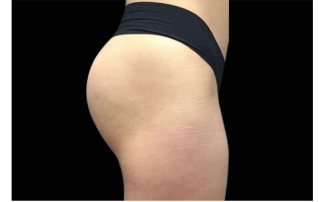


3 MONTHS AFTER THE LAST TREATMENT, COURTESY OF: BRUCE E. KATZ, M.D.

BEFORE

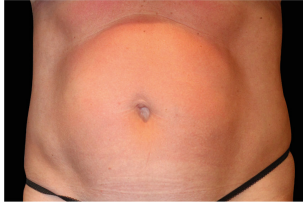


AFTER EMSCULPT<sup>®</sup>



8 WEEKS AFTER THE LAST TREATMENT, COURTESY OF: SEASIDE AESTHETICS

BEFORE

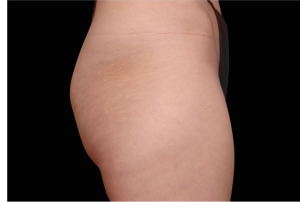


AFTER EMSCULPT<sup>®</sup>



6 MONTHS AFTER THE LAST TREATMENT, COURTESY OF: JULENE SAMUELS, M.D.

BEFORE



AFTER EMSCULPT<sup>®</sup>



IMMEDIATELY AFTER THE LAST TREATMENT, COURTESY OF: LASKY AESTHETICS

BEFORE



AFTER EMSCULPT<sup>®</sup>



6 MONTHS AFTER THE LAST TREATMENT, COURTESY OF: DAVID KENT, M.D.

BEFORE



AFTER EMSCULPT<sup>®</sup>

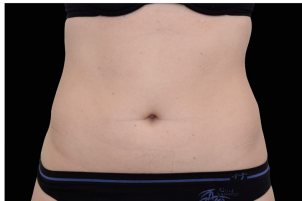


3 MONTHS AFTER THE LAST TREATMENT, COURTESY OF: BRUCE E. KATZ, M.D.

BEFORE



AFTER EMSCULPT<sup>®</sup>



1 MONTH AFTER THE LAST TREATMENT, COURTESY OF: RADINA DENKOVA, M.D.

BEFORE



AFTER EMSCULPT<sup>®</sup>



4 WEEKS AFTER THE LAST TREATMENT, COURTESY OF: RAMINDER SALUJA, M.D.

## Backed by Science

# 7\*

## New Clinical Studies

---

EMSCULPT NEO showed consistency in eliminating fat and/or building muscle in all latest clinical studies.

# 30\*

## Scientific Publications

---

More than 30 scientific publications since 2018 make HIFEM the most intensively researched technology used in non-invasive body shaping.

EMSCULPT  
neo®

## Frequently Asked Questions

### **Why is Emsculpt NEO the ONE in body shaping?**

EMSCULPT NEO is the first procedure to provide simultaneous fat elimination and muscle building in a combined 30-minute session.

### **Am I a candidate?**

Everybody can benefit from more muscles and less fat. Ask your provider if the treatment is suitable for you.

### **What is the treatment time?**

Four 30-minute treatments scheduled once a week are recommended. Your provider will help you create a treatment plan tailored to your specific goals.

### **Is there any downtime?**

#### **Any pre/post-treatment preparation?**

EMSCULPT NEO is a non-invasive procedure that requires no recovery time or any pre-treatment preparation.

### **What does it feel like?**

EMSCULPT NEO procedure feels like an intense workout with a warming sensation in the treated area. You can lay down and relax during the treatment.

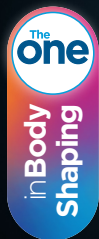
### **Does it really work?**

YES! EMSCULPT NEO showed consistency in eliminating fat and/or building muscle in seven latest clinical studies. Moreover, 30 scientific publications make HIFEM the most intensively researched body contouring technology since its introduction in 2018.

### **How fast will I see results?**

You begin to feel tangible results right after the treatments. Positive results are usually reported two to four weeks after the last session and continue to improve for several weeks following treatment.

# EMSCULPT neo®



Ask Your  
Provider  
Today!



EMSCULPTNEO.COM  
#EMSCULPT



## Results and patient experience may vary.

As with any medical procedure, ask your doctor if the EMSculpt Neo® procedure is right for you. EMSculpt Neo® is intended for non-invasive lipolysis (breakdown of fat) of the abdomen and reduction in circumference of the abdomen with Skin Type I to Skin Type III. EMSculpt Neo® is also cleared for improvement of abdominal tone, strengthening of the abdominal muscles and development of firmer abdomen. Strengthening, toning, firming of buttocks, thighs, and calves. Improvement of muscle tone and firmness, for strengthening muscles in arms. ©2020 BTL Group of Companies. All rights reserved. BTL®, EMSculpt Neo® and EMSculpt® are registered trademarks in the United States of America, the European Union, or other countries. The products, the methods of manufacture or the use may be subject to one or more U.S. or foreign patents or pending applications. Trademarks EMSculpt®, EMSculpt Neo®, EMSella®, EMTone®, Embody®, and HIFEM® are parts of EM™ Family of products. \*Data on File.

899-75EMCNFAAENUS100; Emsculpt\_Neo\_BR\_FAA\_ENUS100